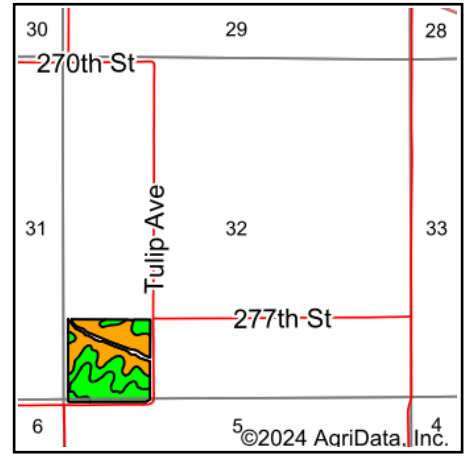
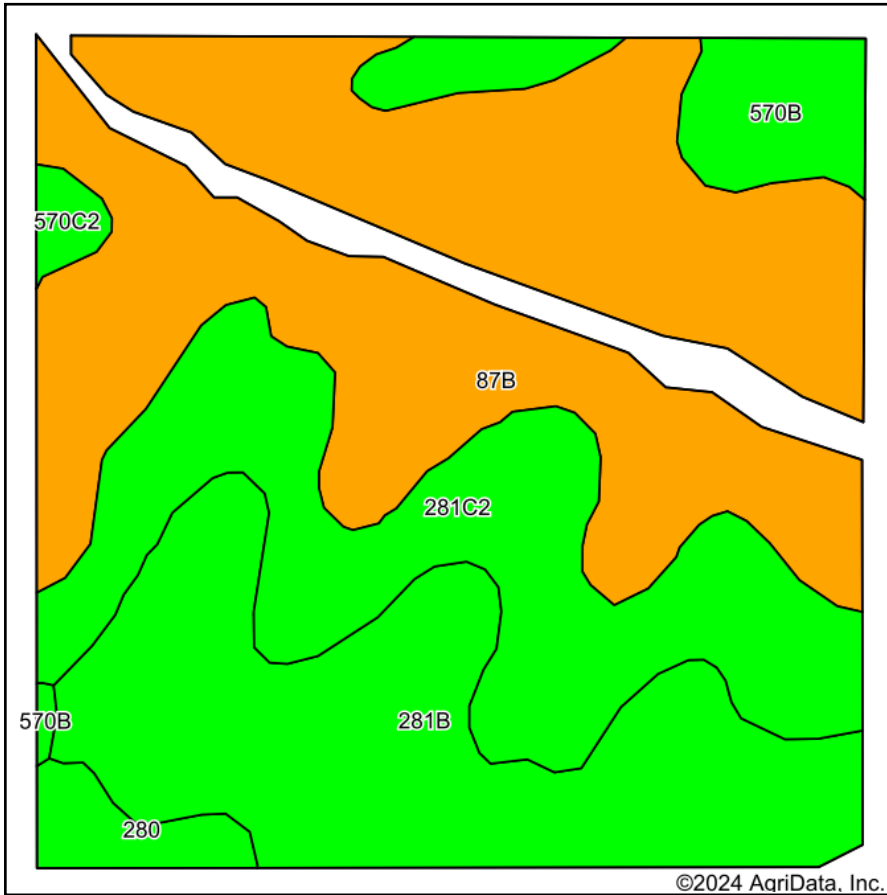


Soils Map



State: **Iowa**
 County: **Washington**
 Location: **32-75N-6W**
 Township: **Oregon**
 Acres: **35.15**
 Date: **11/27/2024**



Maps Provided By:







 CUSTOMIZED ONLINE MAPPING
 © AgriData, Inc. 2023 www.AgriDataInc.com



Soils data provided by USDA and NRCS.

©2024 AgriData, Inc.

Area Symbol: IA183, Soil Area Version: 31

Code	Soil Description	Acres	Percent of field	CSR2 Legend	Non-Irr Class *c	CSR2**	CSR	
87B	Colo-Zook silty clay loams, 0 to 3 percent slopes	15.41	43.9%		IIw	68	60	
281B	Otley silty clay loam, 2 to 5 percent slopes	8.69	24.7%		IIe	91	90	
281C2	Otley silty clay loam, 5 to 9 percent slopes, eroded	7.82	22.2%		IIIe	82	70	
570B	Nira silty clay loam, 2 to 5 percent slopes	2.14	6.1%		IIe	81	87	
280	Mahaska silty clay loam, 0 to 2 percent slopes	0.77	2.2%		Iw	94	95	
570C2	Nira silty clay loam, 5 to 9 percent slopes, moderately eroded	0.32	0.9%		IIIe	71	67	
Weighted Average						2.21	78.2	72.1

**IA has updated the CSR values for each county to CSR2.

*c: Using Capabilities Class Dominant Condition Aggregation Method